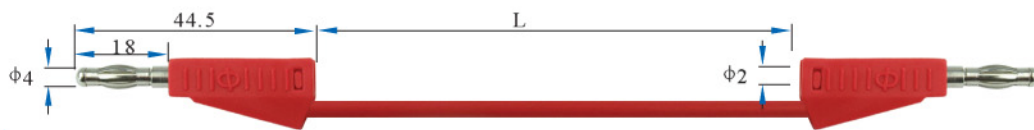


4mm Test Lead

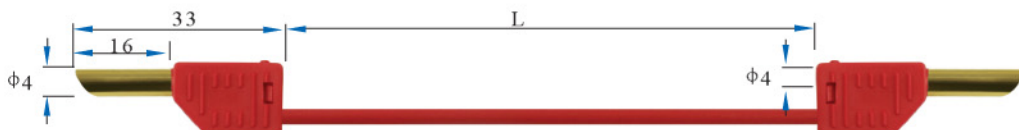
Test lead with the 4mm stackable nickel plated plug on both ends.



22.090.	<input type="checkbox"/> *	Rated voltage/current: 30Vac-60Vdc/Max.15A	0.75mm ² PVC	<input type="checkbox"/> 025	<input type="checkbox"/> 050	<input type="checkbox"/> 100
22.100.	<input type="checkbox"/> *	Rated voltage/current: 30Vac-60Vdc/Max.15A	0.75mm ² SIL	<input type="checkbox"/> 025	<input type="checkbox"/> 050	<input type="checkbox"/> 100
22.110.	<input type="checkbox"/> *	Rated voltage/current: 30Vac-60Vdc/Max.19A	1.0mm ² JBF	<input type="checkbox"/> 025	<input type="checkbox"/> 050	<input type="checkbox"/> 100

4mm Test Lead

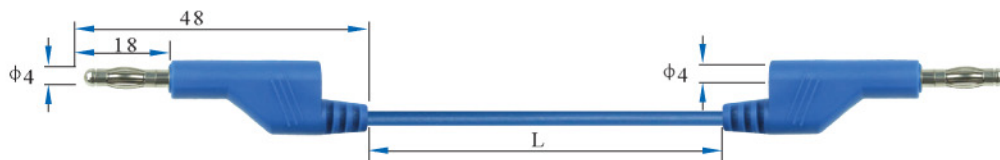
Test lead with the 4mm stackable gold plated plug on both ends.



22.120.	<input type="checkbox"/> *	Rated voltage/current: 30Vac-60Vdc/Max.15A	0.75mm ² PVC	<input type="checkbox"/> 025	<input type="checkbox"/> 050	<input type="checkbox"/> 100
22.130.	<input type="checkbox"/> *	Rated voltage/current: 30Vac-60Vdc/Max.15A	0.75mm ² SIL	<input type="checkbox"/> 025	<input type="checkbox"/> 050	<input type="checkbox"/> 100
22.140.	<input type="checkbox"/> *	Rated voltage/current: 30Vac-60Vdc/Max.19A	1.0mm ² JBF	<input type="checkbox"/> 025	<input type="checkbox"/> 050	<input type="checkbox"/> 100

4mm Test Lead

Test lead with the injected 4mm stackable nickel plated plug on both ends.



22.150.	<input type="checkbox"/> *	Rated voltage/current: 30Vac-60Vdc/Max.15A	0.75mm ² PVC	<input type="checkbox"/> 025	<input type="checkbox"/> 050	<input type="checkbox"/> 100
22.160.	<input type="checkbox"/> *	Rated voltage/current: 30Vac-60Vdc/Max.15A	0.75mm ² SIL	<input type="checkbox"/> 025	<input type="checkbox"/> 050	<input type="checkbox"/> 100
22.170.	<input type="checkbox"/> *	Rated voltage/current: 30Vac-60Vdc/Max.32A	2.5mm ² SIL	<input type="checkbox"/> 025	<input type="checkbox"/> 050	<input type="checkbox"/> 100

4mm Test Lead

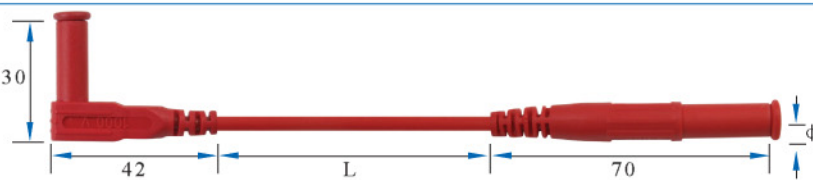
Test lead with the 4mm nickel plated plug on both ends.



22.180.	<input type="checkbox"/> *	Rated voltage/current: 30Vac-60Vdc/Max.15A	0.75mm ² PVC	<input type="checkbox"/> 025	<input type="checkbox"/> 050	<input type="checkbox"/> 100
22.190.	<input type="checkbox"/> *	Rated voltage/current: 30Vac-60Vdc/Max.15A	0.75mm ² SIL	<input type="checkbox"/> 025	<input type="checkbox"/> 050	<input type="checkbox"/> 100
22.200.	<input type="checkbox"/> *	Rated voltage/current: 30Vac-60Vdc/Max.19A	1.0mm ² JBF	<input type="checkbox"/> 025	<input type="checkbox"/> 050	<input type="checkbox"/> 100

4mm Safety Test Lead

Safety test lead one end with the insulated 4mm straight plug and the other end with the insulated 4mm angled plug. Nickel plated plugs with the protective cap. Injected type.

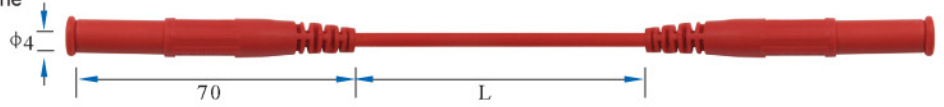


22.210.	<input type="checkbox"/> *	Rated voltage/current: CATIII 1000V/15A	0.75mm ² PVC	<input type="checkbox"/> 025	<input type="checkbox"/> 050	<input type="checkbox"/> 100	<input type="checkbox"/> CE
22.220.	<input type="checkbox"/> *	Rated voltage/current: CATIII 1000V/19A	1.0mm ² JBF	<input type="checkbox"/> 025	<input type="checkbox"/> 050	<input type="checkbox"/> 100	<input type="checkbox"/> CE
22.230.	<input type="checkbox"/> *	Rated voltage/current: CATIII 1000V/32A	2.5mm ² SIL	<input type="checkbox"/> 025	<input type="checkbox"/> 050	<input type="checkbox"/> 100	<input type="checkbox"/> CE



4mm Safety Test Lead

Safety test lead with the insulated 4mm angled plug on both ends. Nickel plated plugs with the protective cap. Injected type.

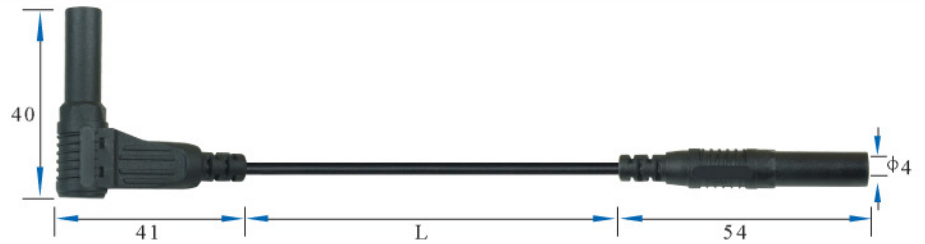


22.240. <input type="checkbox"/> *	Rated voltage/current: CATIII 1000V/15A	0.75mm ² PVC	025	050	100	CE
22.250. <input type="checkbox"/> *	Rated voltage/current: CATIII 1000V/19A	1.0mm ² JBF	025	050	100	CE
22.260. <input type="checkbox"/> *	Rated voltage/current: CATIII 1000V/32A	2.5mm ² SIL	025	050	100	CE



4mm Safety Test Lead

Safety test lead one end with the insulated 4mm straight plug and the other end with the insulated 4mm angled plug. Nickel plated plugs with the protective cap. Assembled type.



22.270. <input type="checkbox"/> *	Rated voltage/current: CATIII 1000V/15A	0.75mm ² PVC	025	050	100	CE
22.280. <input type="checkbox"/> *	Rated voltage/current: CATIII 1000V/19A	1.0mm ² JBF	025	050	100	CE
22.290. <input type="checkbox"/> *	Rated voltage/current: CATIII 1000V/32A	2.5mm ² SIL	025	050	100	CE



4mm Safety Test Lead

Safety test lead with the insulated 4mm straight plug on both ends. Nickel plated plugs with the protective cap. Assembled type.

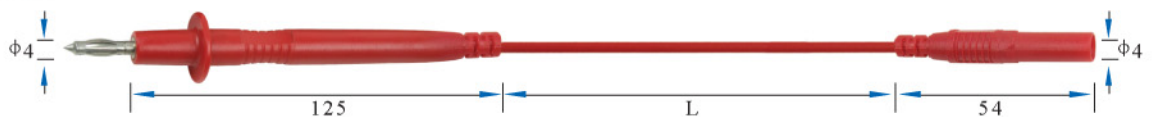


22.300. <input type="checkbox"/> *	Rated voltage/current: CATIII 1000V/15A	0.75mm ² PVC	025	050	100	CE
22.310. <input type="checkbox"/> *	Rated voltage/current: CATIII 1000V/19A	1.0mm ² JBF	025	050	100	CE
22.320. <input type="checkbox"/> *	Rated voltage/current: CATIII 1000V/32A	2.5mm ² SIL	025	050	100	CE



Multimeter Test Lead

Test lead one end with the test probe and the other with the insulated 4mm straight plug. Nickel plated and assembled type.

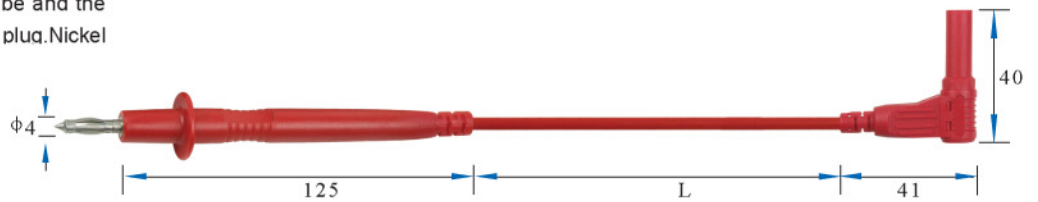


22.330. <input type="checkbox"/> *	Rated voltage/current: CATIII 1000V/15A	0.75mm ² PVC	025	050	100	CE
22.340. <input type="checkbox"/> *	Rated voltage/current: CATIII 1000V/19A	1.0mm ² JBF	025	050	100	CE
22.350. <input type="checkbox"/> *	Rated voltage/current: CATIII 1000V/32A	2.5mm ² SIL	025	050	100	CE



Multimeter Test Lead

Test lead one end with the test probe and the other with the insulated 4mm angled plug. Nickel plated and assembled type.



1 2

22.360.□*	Rated voltage/current: CATIII 1000V/15A	0.75mm ² PVC	025	050	100	CE
22.370.□*	Rated voltage/current: CATIII 1000V/19A	1.0mm ² JBF	025	050	100	CE
22.380.□*	Rated voltage/current: CATIII 1000V/32A	2.5mm ² SIL	025	050	100	CE



4mm Safety Test Lead

Safety test lead with the insulated 4mm stackable plug on both ends. Nickel plated plugs with the red cap.



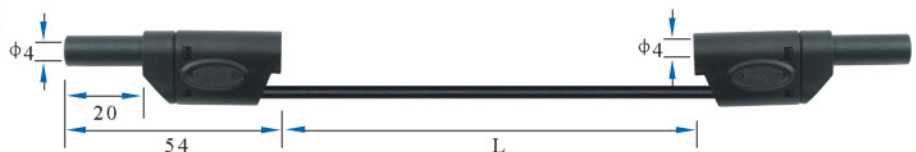
1 2 3 4 5 0

22.390.□*	Rated voltage/current: CATIII 600V/19A	1.0mm ² JBF	025	050	100	CE
22.400.□*	Rated voltage/current: CATIII 600V/32A	2.5mm ² JBF	025	050	100	CE
22.410.□*	Rated voltage/current: CATIII 600V/32A	2.5mm ² SIL	025	050	100	CE



4mm Safety Test Lead

Safety test lead with the insulated 4mm stackable plug on both ends. Nickel plated plugs with the red cap.



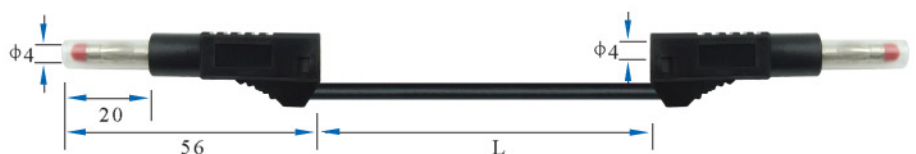
1 2 3 4 5 0

22.420.□*	Rated voltage/current: CATIII 600V-CATII 1000V/19A	1.0mm ² JBF	025	050	100	CE
22.430.□*	Rated voltage/current: CATIII 600V-CATII 1000V/32A	2.5mm ² JBF	025	050	100	CE
22.440.□*	Rated voltage/current: CATIII 600V-CATII 1000V/32A	2.5mm ² SIL	025	050	100	CE



4mm Test Lead

Safety test lead with 4mm stackable plug on both ends. Nickel plated plugs with the shrinkable tube and red cap.



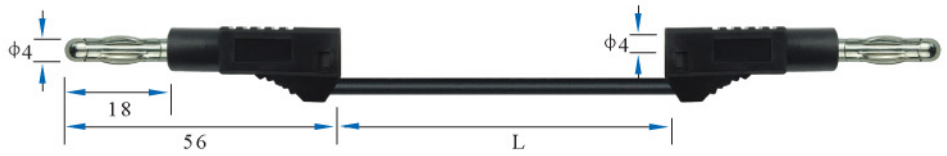
1 2 3 4 5

22.450.□*	Rated voltage/current: CATII 600V/19A	1.0mm ² JBF	025	050	100	CE
22.460.□*	Rated voltage/current: CATII 600V/32A	2.5mm ² JBF	025	050	100	CE
22.470.□*	Rated voltage/current: CATII 600V/32A	2.5mm ² SIL	025	050	100	CE



4mm Test Lead

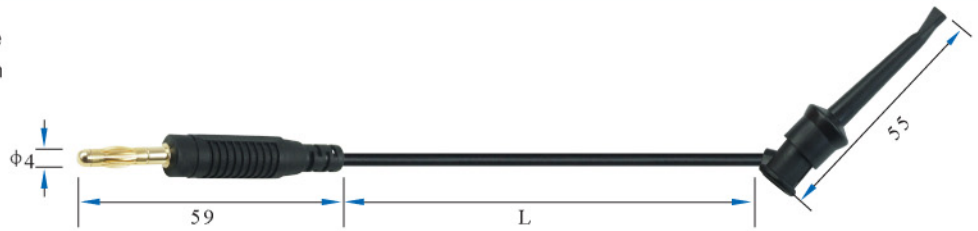
Test lead with the injected 4mm stackable nickel plated plug on both ends.



22.480.	<input type="checkbox"/> *	Rated voltage/current: 30Vac-60Vdc/Max.15A	1.0mm ² JBF	025	050	100
22.490.	<input type="checkbox"/> *	Rated voltage/current: 30Vac-60Vdc/Max.15A	2.5mm ² JBF	025	050	100
22.500.	<input type="checkbox"/> *	Rated voltage/current: 30Vac-60Vdc/Max.32A	2.5mm ² SIL	025	050	100

4mm Test Lead

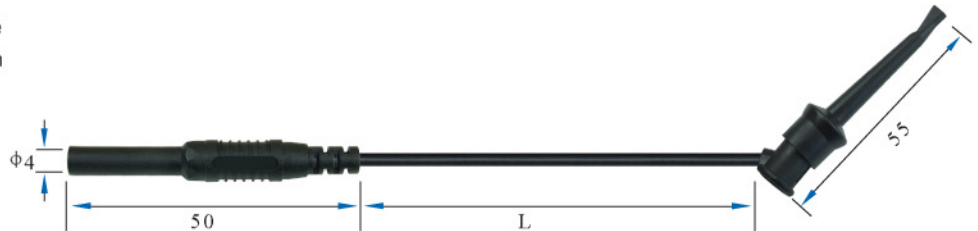
Test lead one end with the 4mm stackable nickel plated plug and the other end with 55mm length nickel plated crocodile clip.



22.510.	<input type="checkbox"/> *	Rated voltage/current: 30Vac-60Vdc/Max.15A	0.75mm ² PVC	025	050	100
22.520.	<input type="checkbox"/> *	Rated voltage/current: 30Vac-60Vdc/Max.15A	0.75mm ² SIL	025	050	100

4mm Test Lead

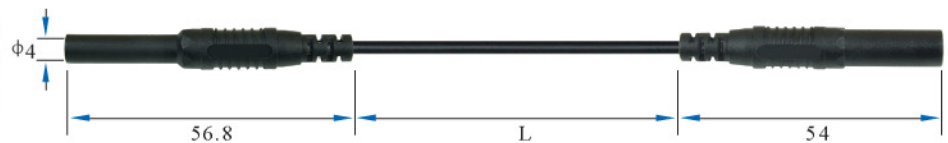
Test lead one end with the 4mm stackable nickel plated plug and the other end with 55mm length nickel plated crocodile clip.



22.530.	<input type="checkbox"/> *	Rated voltage/current: 30Vac-60Vdc/Max.15A	0.75mm ² PVC	025	050	100
22.540.	<input type="checkbox"/> *	Rated voltage/current: 30Vac-60Vdc/Max.15A	0.75mm ² SIL	025	050	100

4mm Test Lead

Safety test lead one end with insulated 4mm straight plug and the other with the Nickel plated plugs with the protective cap.

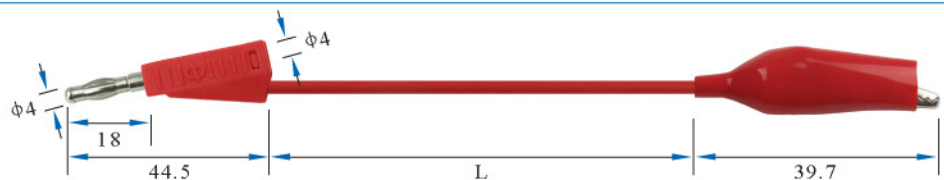


22.550.	<input type="checkbox"/> *	Rated voltage/current: CATIII 1000V/15A	0.75mm ² PVC	025	050	100	CE
22.560.	<input type="checkbox"/> *	Rated voltage/current: CATIII 1000V/15A	0.75mm ² SIL	025	050	100	CE



4mm Test Lead

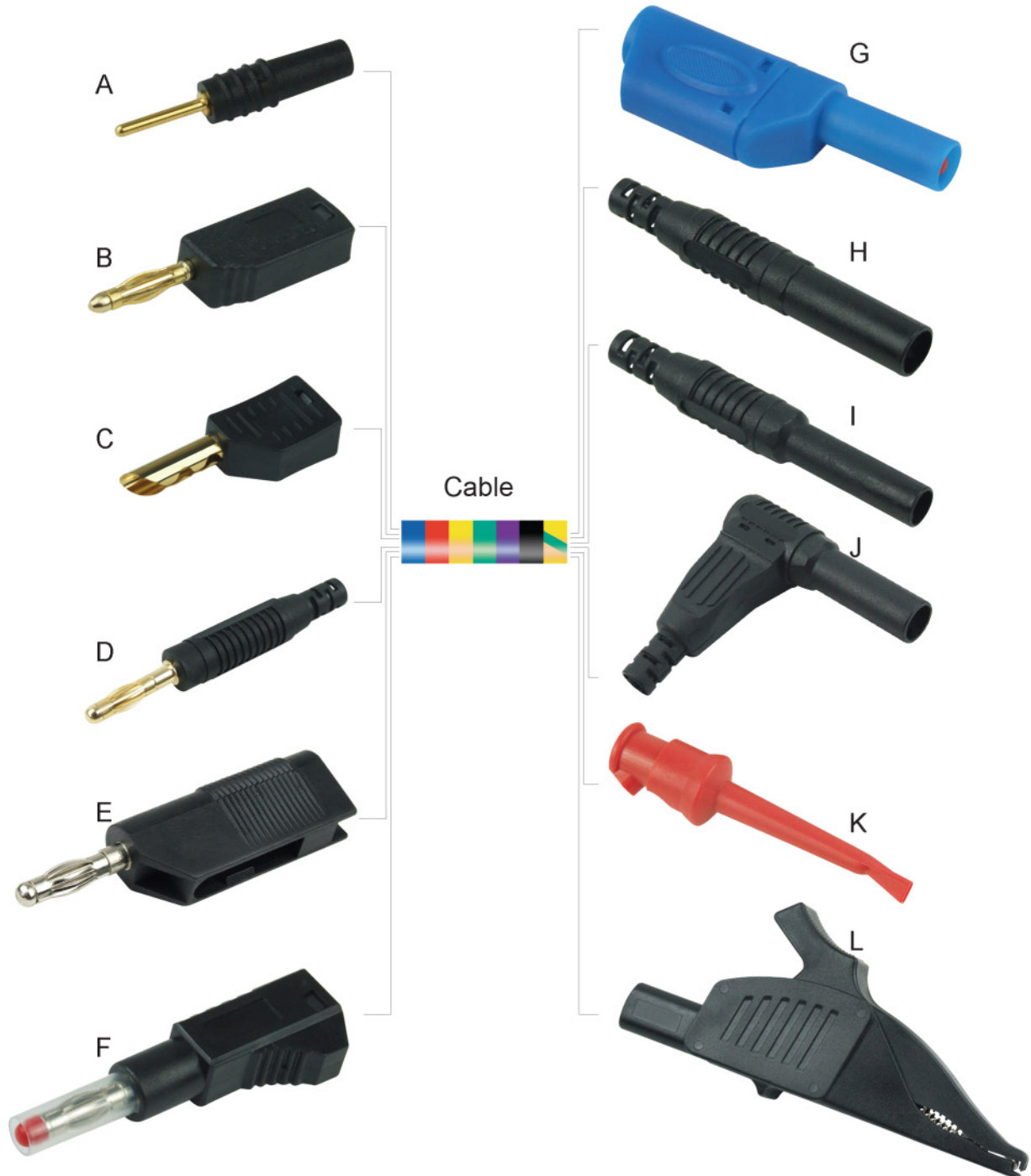
Test lead one end with the 4mm stackable nickel plated plug and the other end with 55mm length nickel plated crocodile clip.



22.570.	<input type="checkbox"/> *	Rated voltage/current: 30Vac-60Vdc/Max.15A	0.75mm ² PVC	025	050	100
22.580.	<input type="checkbox"/> *	Rated voltage/current: 30Vac-60Vdc/Max.15A	0.75mm ² SIL	025	050	100

Examples of lead combinations

Item No.: 23.* / *. *

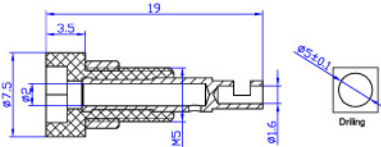


Please state your needs in detail when inquiring!

24.101.*



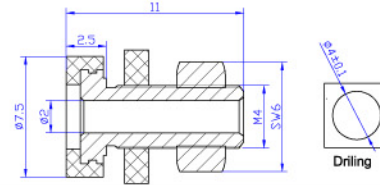
Material
 Insulator:PA
 Body:Brass
 Surface:Gold plated
Rated voltage/current
 30Vac-60Vdc/Max.10A



24.106.*



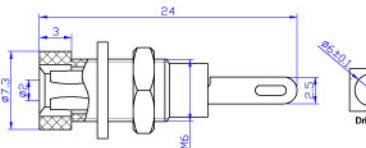
Material
 Insulator:ABS
 Body:Brass
 Surface:Nickel plated
Rated voltage/current
 30Vac-60Vdc/Max.10A



24.102.*



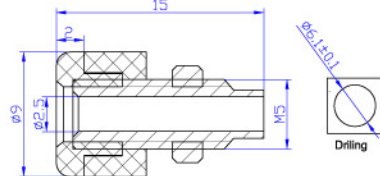
Material
 Insulator:ABS
 Body:Brass
 Surface:Nickel plated
Rated voltage/current
 30Vac-60Vdc/Max.6A



24.107.*



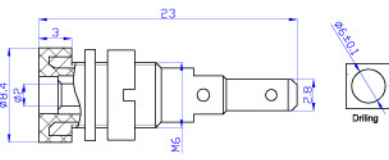
Material
 Insulator:ABS
 Body:Brass
 Surface:Nickel plated
Rated voltage/current
 30Vac-60Vdc/Max.10A



24.103.*



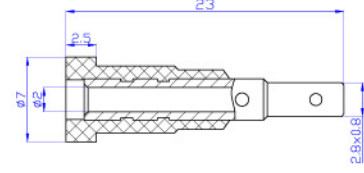
Material
 Insulator:PA
 Body:Brass
 Surface:Nickel plated
Rated voltage/current
 30Vac-60Vdc/Max.10A



24.110.*



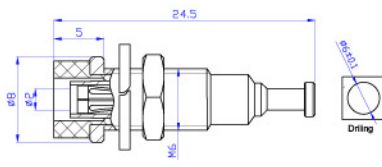
Material
 Insulator:PA
 Body:Brass
 Surface:Gold plated
Rated voltage/current
 30Vac-60Vdc/Max.10A



24.104.*



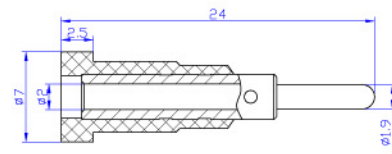
Material
 Insulator:PA
 Body:Brass
 Surface:Nickel plated
Rated voltage/current
 30Vac-60Vdc/Max.10A

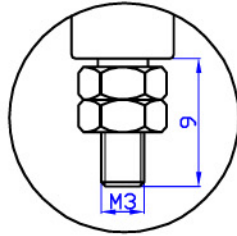
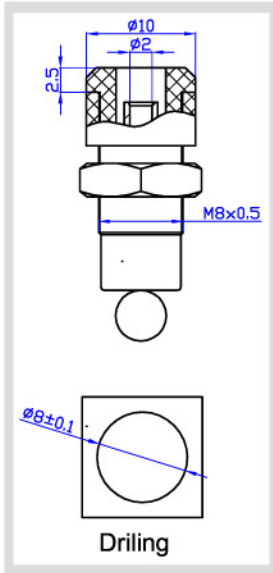


24.111.*

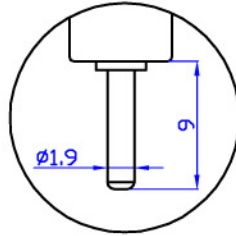


Material
 Insulator:PA
 Body:Brass
 Surface:Gold plated
Rated voltage/current
 30Vac-60Vdc/Max.10A

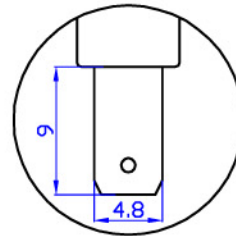




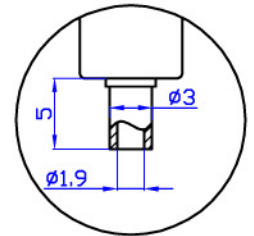
24.131.*



24.132.*



24.133.*



24.134.*

Model.	Material	Rated voltage/current
24.131.*	Insulator:PA	CATIII 600V/Max.10A
24.132.*	Body:Brass	
24.133.*	Surface:Nickel or	
24.134.*	Gold plated	



24.241.*

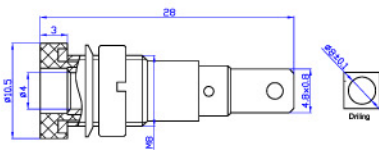


Material

Insulator:PA
Body:Brass
Surface:Nickel plated

Rated voltage/current

30Vac-60Vdc/Max.24A



24.244.*

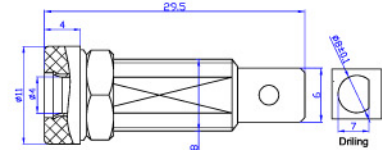


Material

Insulator:ABS
Body:Brass
Surface:Zinc plated

Rated voltage/current

30Vac-60Vdc/Max.24A



24.242.*

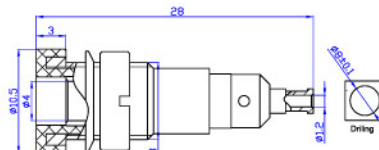


Material

Insulator:PA
Body:Brass
Surface:Nickel plated

Rated voltage/current

30Vac-60Vdc/Max.24A



24.243.*

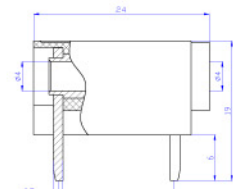


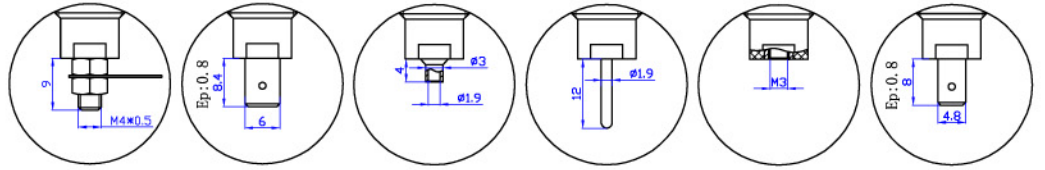
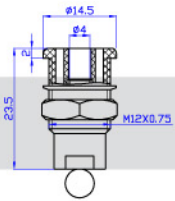
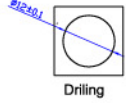
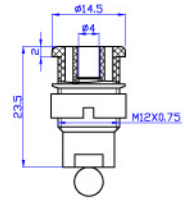
Material

Insulator:PA
Body:Brass
Surface:Silver plated

Rated voltage/current

30Vac-60Vdc/Max.24A

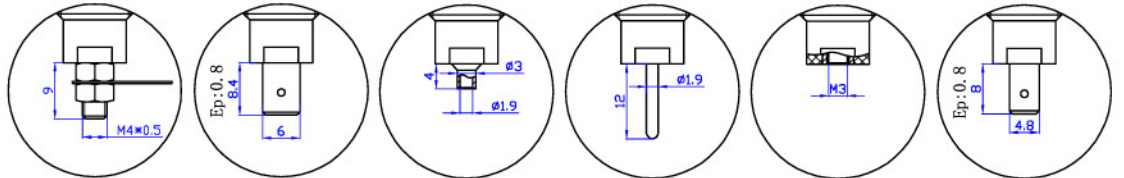
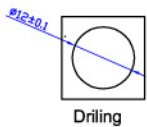
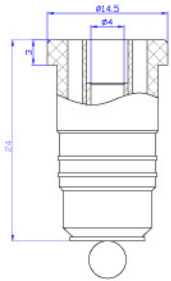




24.301.* 24.302.* 24.303.* 24.304.* 24.305.* 24.306.*

24.311.* 24.312.* 24.313.* 24.314.* 24.315.* 24.316.*

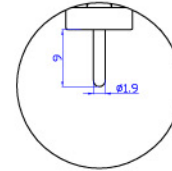
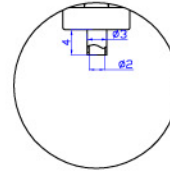
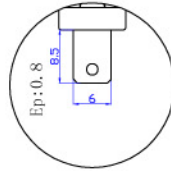
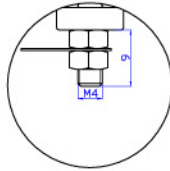
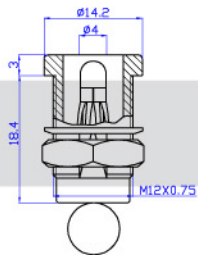
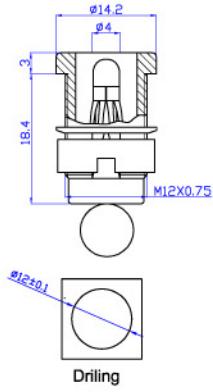
Model.		Material	Rated voltage/current
24.301.*	24.311.*	Insulator:PA Body:Brass Surface:Nickel plated	CATIII 1000V/Max.32A
24.302.*	24.312.*		
24.303.*	24.313.*		CATIII 1000V/Max.24A
24.304.*	24.314.*		CATIII 1000V/Max.32A
24.305.*	24.315.*		
24.306.*	24.316.*		



24.321.* 24.322.* 24.323.* 24.324.* 24.325.* 24.326.*

Model.	Material	Rated voltage/current
24.321.*	Insulator:PA Body:Brass Surface:Nickel plated	CATIII 1000V/Max.32A
24.322.*		
24.323.*		CATIII 1000V/Max.24A
24.324.*		CATIII 1000V/Max.32A
24.325.*		
24.326.*		





24.381.*

24.382.*

24.383.*

24.384.*

24.391.*

24.392.*

24.393.*

24.394.*

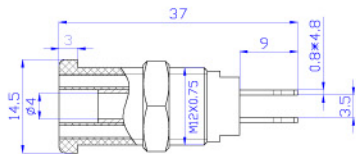
Model.		Material	Rated voltage/current
24.381.*	24.391.*	Insulator:PA Body:Brass Surface:Nickel plated	CATIII 1000V/Max.32A
24.382.*	24.392.*		CATIII 1000V/Max.24A
24.383.*	24.393.*	Insulator:PA Body:Brass Surface:Nickel plated	CATIII 1000V/Max.32A
24.384.*	24.394.*		CATIII 1000V/Max.32A



24.260.*



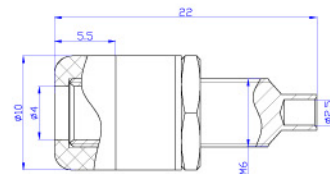
Material
Insulator:PA
Body:Brass
Surface:Nickel plated
Rated voltage/current
CATIII 1000V/Max.32A



24.247.*



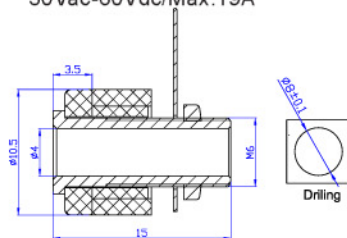
Material
Insulator:ABS
Body:Brass
Surface:Nickel plated
Rated voltage/current
30Vac-60Vdc/Max.24A



24.246.*



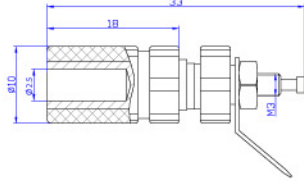
Material
Insulator:ABS
Body:Brass
Surface:Nickel plated
Rated voltage/current
30Vac-60Vdc/Max.19A



24.823.*



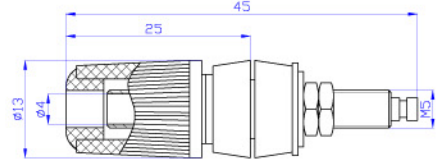
Material
 Insulator:ABS
 Body:Brass
 Surface:Nickel plated
Rated voltage/current
 30Vac-60Vdc/Max.19A



24.827.*



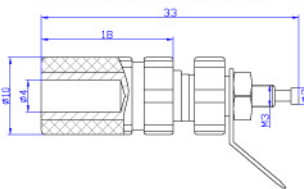
Material
 Insulator:ABS
 Body:Brass
 Surface:Nickel plated
Rated voltage/current
 30Vac-60Vdc/Max.24A



24.824.*



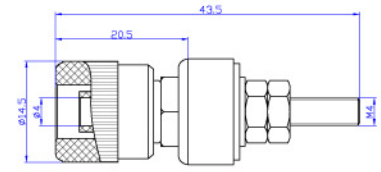
Material
 Insulator:ABS
 Body:Brass
 Surface:Nickel plated
Rated voltage/current
 30Vac-60Vdc/Max.24A



24.828.*



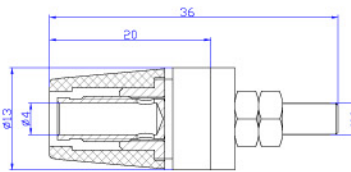
Material
 Insulator:ABS
 Body:Brass
 Surface:Nickel plated
Rated voltage/current
 30Vac-60Vdc/Max.24A



24.825.*



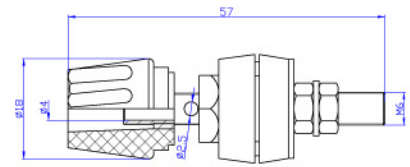
Material
 Insulator:ABS
 Body:Brass
 Surface:Nickel plated
Rated voltage/current
 30Vac-60Vdc/Max.24A



24.932.*



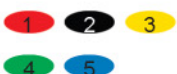
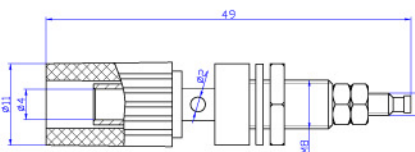
Material
 Insulator:ABS
 Body:Brass
 Surface:Nickel plated
Rated voltage/current
 30Vac-60Vdc/Max.50A



24.826.*



Material
 Insulator:ABS
 Surface:Nickel plated
Rated voltage/current
 30Vac-60Vdc/Max.19A



24.933.*



Material
 Insulator:ABS
 Body:Brass
 Surface:Nickel plated
Rated voltage/current
 30Vac-60Vdc/Max.60A

